

**SAFETY VALVES
TYPE SVE06**

www.hl-hydraulik.de



**SAFETY VALVE TYPE V600
ORDERINGNO SVE06 - 87202**

Application: Schrupp safety valves type SV06-1 and SV06-2 are spring loaded valves designed to protect compressors from over-pressurization.

The Schrupp safety valves can also be used to protect pressure vessels containing non-poisonous gases.

Special characteristics:

TUV approval up to 350 bar
Acc. To 97/23/EC, Group 2, Div IV
Low hysteresis and good operational control even under adverse conditions.

Compact design
Robust design
Easy to maintain

Technical Data:

DN6 Opening Pressure: Type SV06-1 Pressure range 150 -350bar

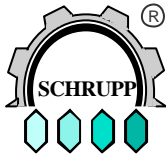
Type SV06-2 Pressure range 55 - 150bar

Flow rate(liters/min) = 32.2 x pressure(bar)
Ambient Temperature: 0-70 degrees C.

proportional safety valve, mass 1,3kg.

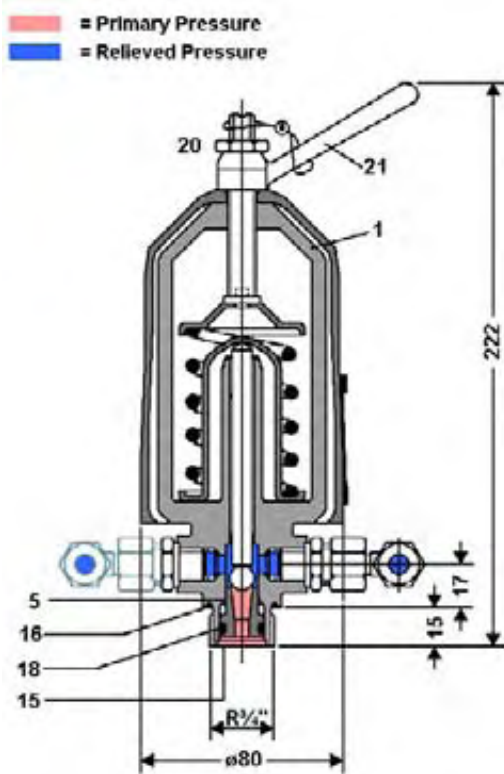
Notice:

Valves are shipped with plugged ports. Please remove before installation



**SAFETY VALVES
TYPE SVE06**

www.hl-hydraulik.de



Functional Description: Port R is connected to the compressor or high pressure vessel. In the event of over-pressure, the ball lifts from the seat and bleeds pressure through the side outlet port. The elbow fittings can be arranged to send the air in any direction. To check valve function, turn lever #21 counter-clockwise to valve housing, #1. This test will not affect the pressure set point.

The set pressure can be adjusted by turning lever #21 after loosening locking nut #20. (Turn clockwise to increase pressure set point.) After adjustment, re-tighten locking nut #20. The valves do not require regular servicing. Periodically, tests are required, according to 97/23EC.

Spare parts kit numbe: SVE 06 VTS 87202-92

Mark Number	Description
5	Seat
15	O-ring
16	O-ring
18	Back up ring

Note: The set pressure for type SV06 can be adjusted in the range as shown below:
On request, the adjustment can be made by TUV or on the Schrupp test stand.

Set Pressure

SV06

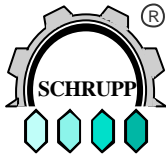
Set pressure in bar	Set pressure in bar
150 - 175	55 - 66
175.1 - 220	66.1 - 85
220.1 - 350	85.1 - 110
	110.1 - 135
	135.1 - 150

Ordering example

SVE 06 - 55-66 - 87202

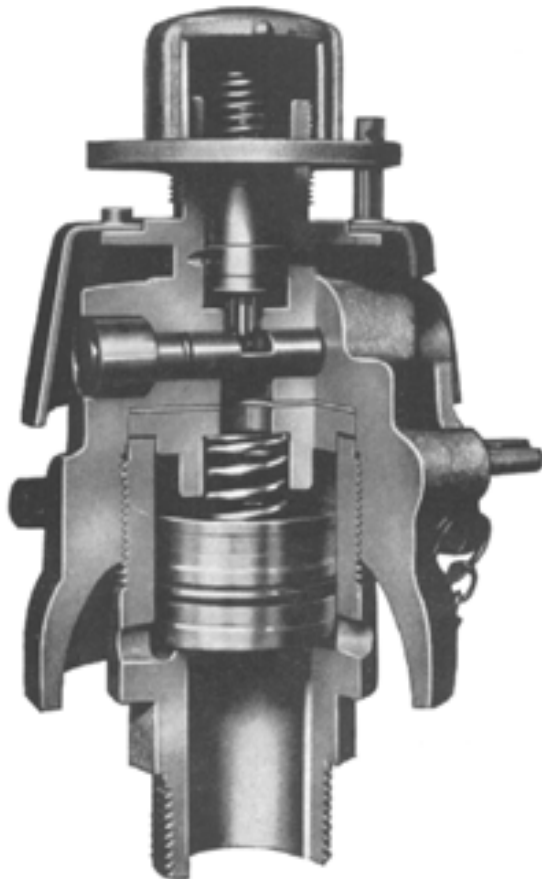
Type

Pressure set point



**SAFETY VALVES (POP OFF)
TYPE SVE30**

www.hl-hydraulik.de



Safety Valves Type S650:

Orderingno. SVE 30

Application: The Schrupp SV30 safety valve is a spring loaded valve used to protect vessels containing non-toxic gases from over-pressurization. Upon reaching the set pressure, the valve opens fully and immediately.

Special Features: Pilot operation
According to 97/23/EC
Robust design
Low hysteresis
Excellent control even under adverse conditions
Easy to maintain and install

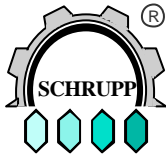
Technical Data: Nominal Size: Dn 30
Set pressure from 4.5 to 44 bar
Flow rate: 4750 – p in liter/min
Weight: approximately 3.2 kg

SVE30 - 41.1-44 - 89062

Pressure [bar]

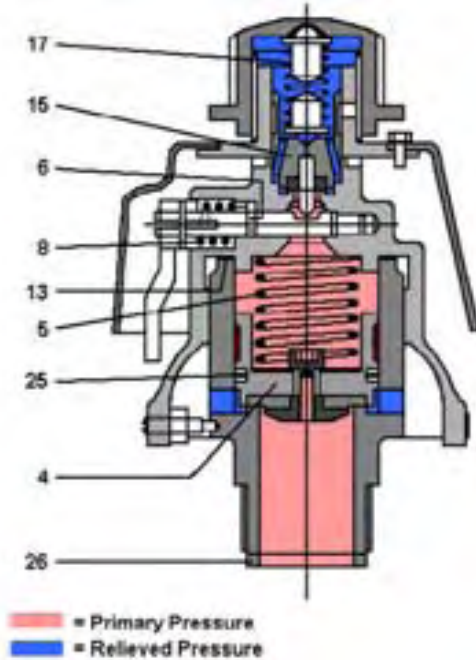
4.5	-	6
6.1	-	8
8.1	-	13
13.1	-	18
18.1	-	21
21.1	-	25
25.1	-	30
30.1	-	35
35.1	-	41
41.1	-	44

Accessory: reducer to NG 15
Model number: **SVE30 RED 15 - 89062-92**



**SAFETY VALVES (POP OFF)
TYPE SVE30**

www.hl-hydraulik.de



Maintenance and Operation:

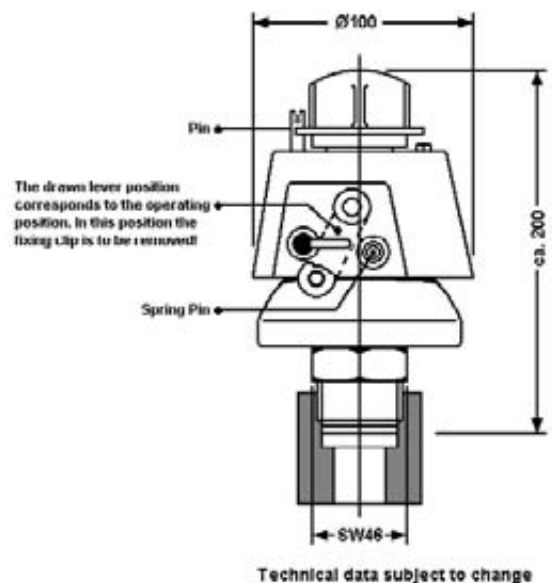
1. **Shipping and Storage** During transportation or storage, the valve should be locked in the open position by use of the manual handle. All ports must be plugged. To open the valve, the lever should be moved against the spring force to the end position and fixed by the holding clamp.
2. **Installation** On pressure vessels or pipes with minimum inside diameter of 1 inch. For installation, use only original seals; never use glue or other additional seal materials.

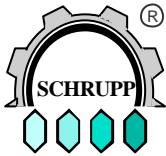
3. **Adjustment of Set Pressure** After removing the pin the set pressure can be changed, by turning the thread cap clockwise (increases set pressure) or counter-clockwise (reduces set pressure).
4. **Noise protection** Because of the possible production of high noise levels, we recommend the use of an ear protection.

Spare parts kit	Part	Qty	Designation
	4	1	Piston
	5	1	Compression spring
	6	1	O-Ring
	8	1	Torsion spring
Order No.	13	1	Seal 45/58 x1
SVE 30 VTS	15	1	Valve insert
	25	1	O-Ring
	26	1	Seal 30/39 X 5

Mode of operation:

- Open:** With increasing pressure the valve insert (15) rises out of its seat and vents air to atmosphere. Then the piston (4) rises out of its seat and the valve opens.
- Closing:** After blowing the pressure off over the piston (4) the valve insert (15) closes fast; the closing process of the piston (4) is delayed until the pressure build-up over the piston (4) escapes through the drilling in the piston. Thus, closing of the piston (4) takes place not via the strength of the spring (5), but with the pressure on the differential area of the piston (4) opposite the valve seat.





**SAFETY VALVES
TYPE SVE 10**

www.hl-hydraulik.de



Sicherheitsventil für Druckluft mit Baumusterprüfung.
TÜV approved Safety Valve for compressed air.

97/23/EC, Gruppe2, KategorieIV

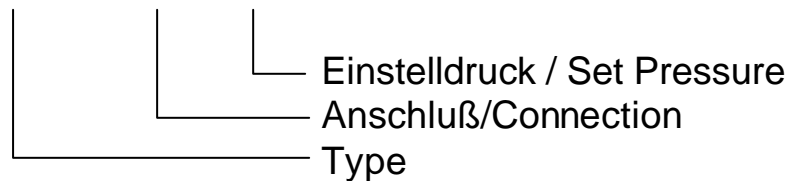
Einstelldruck / Set Pressure: 0,3 – 50 bar

Betriebstemperatur / Operating Temperature: max 180°C

DN: 10mm

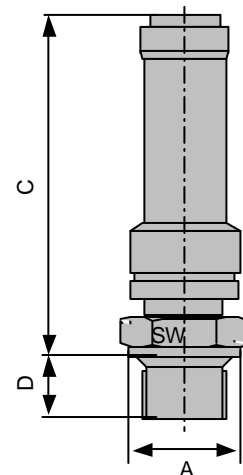
Bestellbeispiel / Ordering Example

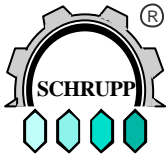
SVE10 - G1/2 - 45 - Teilnr



Teilnr. Partno.	Anschluß Connection	Druckbereich Pressure	SW	A	C	D
850803	G3/8"	0,3 – 8,5 bar	27	22	75	12
850803		8,6 – 40 bar	27	22	95	12
850803		40,1– 50 bar	27	22	120	12
850804	G1/2"	0,3 – 8,5 bar	27	26	75	14
850804		8,6 – 40 bar	27	26	95	14
850804		40,1– 50 bar	27	26	120	14
850805	G3/4"	0,3 – 8,5 bar	32	32	75	16
850805		8,6 – 40 bar	32	32	95	16
850805		40,1– 50 bar	32	32	120	16

Dimensions in mm





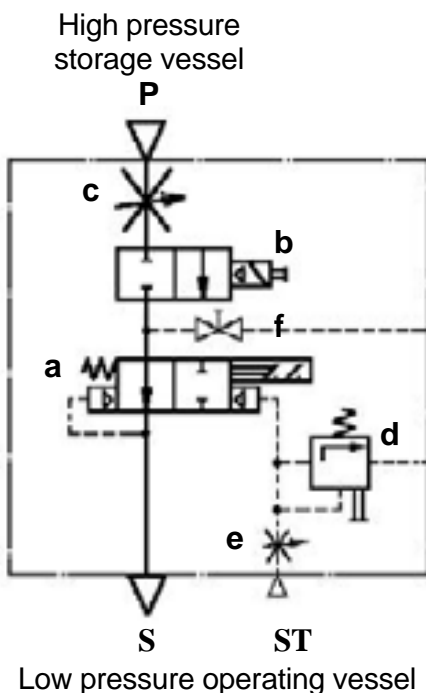
SAFETY DEVICES
TYPE SHE

www.hl-hydraulik.de

Safety devices of the type SHE are used to protect downstream storage vessels which are being fed by a higher operating pressure, against over pressurization. As opposed to the function of a typical safety valve, the Schrupp SHE valve protects the lower rated pressure vessel by closing the interconnection between the two vessels once the set pressure has been reached. In this way, the operational (low pressure) vessel is protected, while at the same time, maintaining the stored pressurized air necessary to ensure operation of the selected component, such as electrical switch gear.

The Schrupp SHE safety device includes the following elements:

- a. Locking valve with electrical position indication switch.
- b. Solenoid actuated, pilot operated, 2/2 way sluice valve.
- c. Throttling Device.
- d. Pressure Relief Valve
- e. Pilot Throttle.
- f. Bleed Valve.



Technical Data

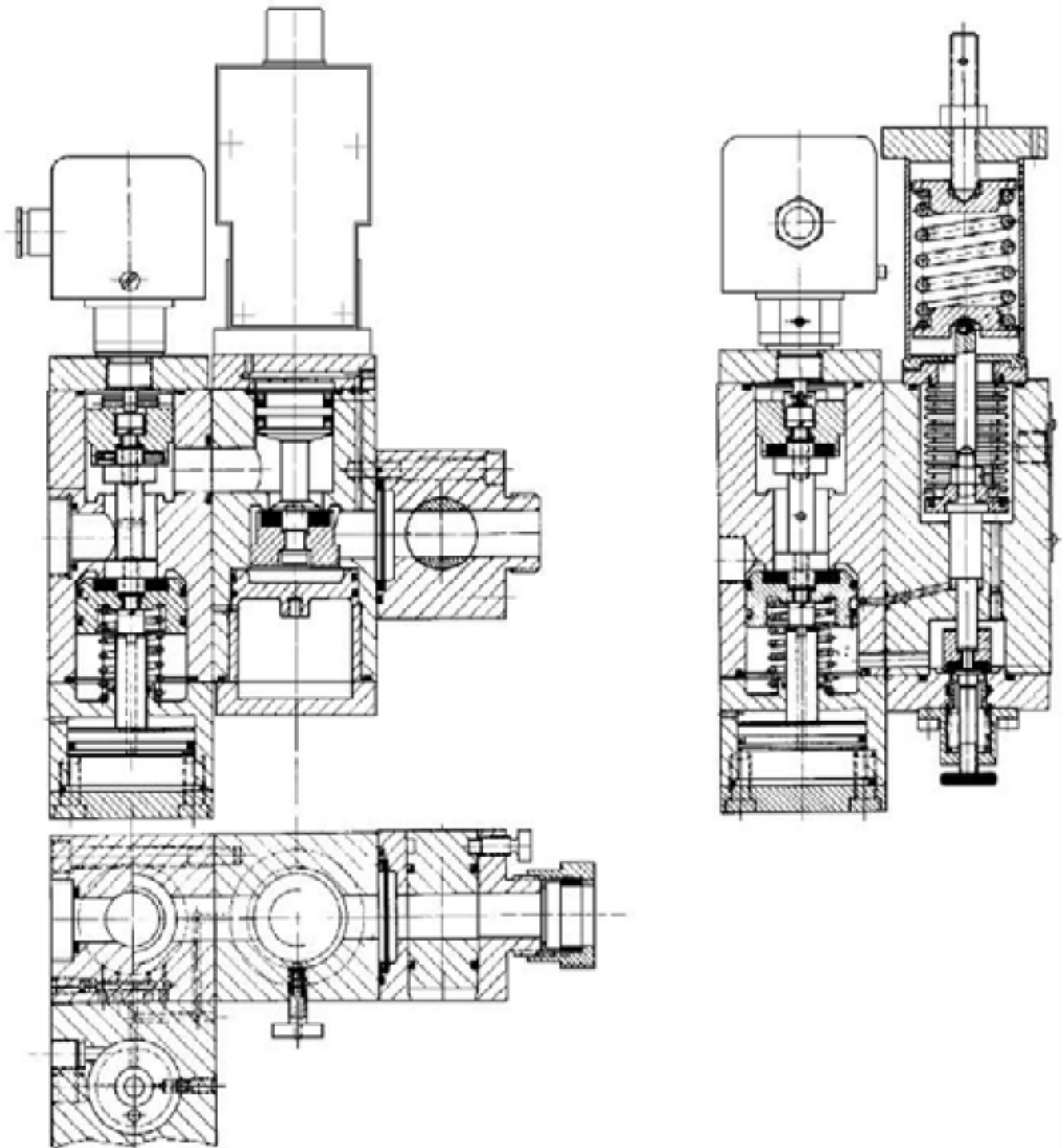
TYPE	SHE 06	SHE 20	
Nominal size	20	10	mm
Primary pressure	64	64 - 200	bar
Secondary pressure	5 - 40	15 - 40	bar
Max flow rate	56,000	56,000	l/min
Mass	ca. 320	ca. 320	N
Nominal size of pressure relief valve	6	6	mm
Port P	M36 x 2	G 3/8"	
Port T	M36 x 2	M36 x 2	
Port ST connection for pipes with outside dimension:	10	10	mm

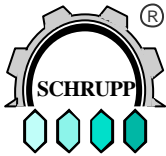
According to 97/23/EC



SAFETY DEVICES
TYPE SHE

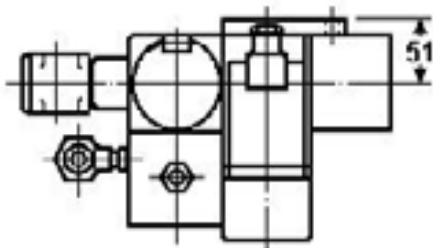
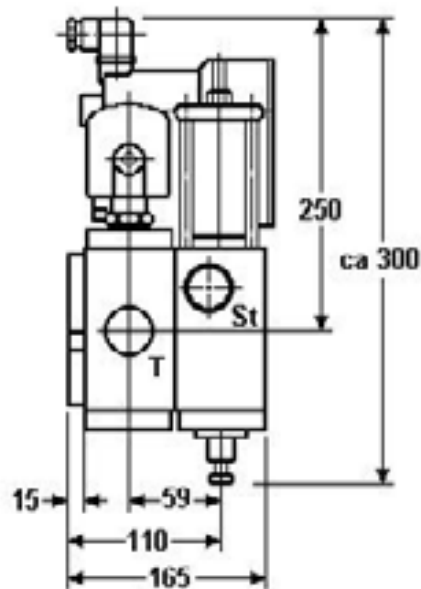
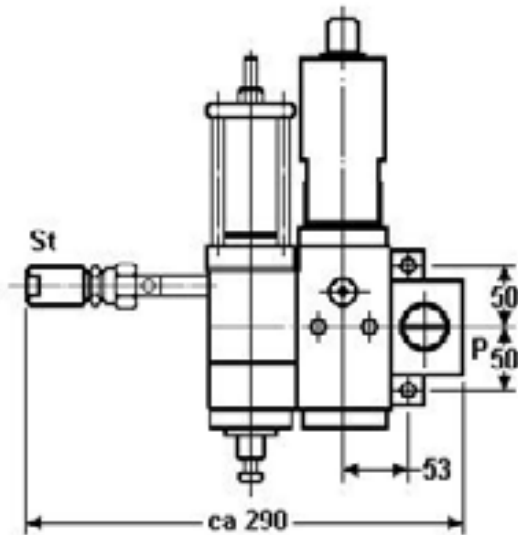
www.hl-hydraulik.de





**SAFETY DEVICES
TYPE SHE**

www.hl-hydraulik.de



Port Connections

SHE 06	P,T	-	M36 x 2
	St	-	10 mm
SHE 20	P	-	G 3/8"
	T	-	M36 x 2
	St	-	10 mm

Ordering code

SHE 06 24GL

Voltage	24v DC = 24GL	=24GL
	240v/60Hz	= 240W
Inlet pressure up to 64 bar		= 064
Inlet pressure up to 200 bar		= 200

Spare parts kit: SHE 06 24GL VTS